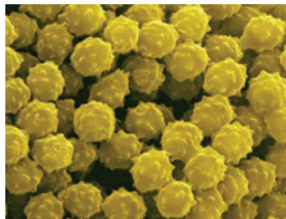
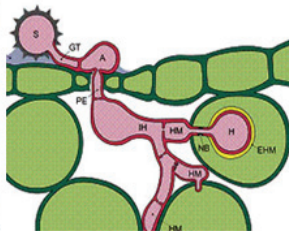
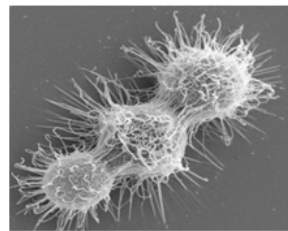
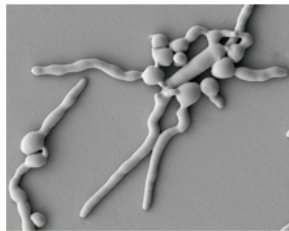


2012년
한국미생물학회
제15회 사상성진균 학술분과
학술발표대회

*Proceedings of
The 15th Fungal Genetics and Biology Conference of
The Microbiological Society of Korea*



January 5-6, 2012
충남 천안상록리조트
Sangnok Resort
Cheonan, Chungnam, Korea

주 최 : 한국미생물학회 사상성진균 학술분과
서울대학교 곰팡이 병원성 연구센터

Organized by

The Microbiological Society of Korea, the Section of Fungal Genetics and Biology

CeFP Center for Fungal Pathogenesis, Seoul National University

CONTENTS

Jan. 5, 2012

12:30-13:00: **Registration**

13:00-13:20: **Opening Ceremony**

Chair : Dr. Kap-Hoon Han (*Woosuk University*)

13:20~14:00: **Dr. Hiromi Nishida** (*University of Tokyo, Japan*)

Comparative studies of fungal nucleosome positioning

Chair : Mr. Lee-Han Kim (*Wonkwang University*)

14:00~14:15: **Jaeduk Goh** (*CeFP & Seoul National University*)

The PEX7-mediated peroxisomal import system is required for fungal development and pathogenicity in *Magnaporthe oryzae*

14:15~14:30: **Je-Hoon Kim** (*Chungnam National University*)

Involvement of fission yeast LAMMER kinase, Lkh1, in regulation of the MBF activity

14:30~14:45: **Tae-Ho Yang** (*Chonbuk National University*)

GanA might be required for establishing normal cell wall structure in *Aspergillus nidulans*

14:45~15:00: **Break**

Chair : Dr. Pil-Jae Maeng (*Chungnam National University*)

15:00~15:20: **Dr. Dong-Min Han** (*Wonkwang University*)

The two negative regulators of sexual development in *Aspergillus nidulans*

15:20~15:40: **Dr. Hong Seung-Beom** (*Korean Agricultural Culture Collection*)

Mycobiota of Korean Traditional Meju

Chair : Dr. Yong-Sun Bahn (*CeFP & Yonsei University*)

15:40~16:20: **Dr. Kiminori Shimizu** (*Chiba University, Japan*)

Histopathological study on *Cryptococcus* infection

16:20~16:35: **Break**

Chair : Ms. Shinae Maeng (*CeFP & Yonsei University*)

16:35~16:50: **Kwang-Woo Jung** (*CeFP & Yonsei University*)

Modulation of the unfolded protein response via Hx11 and Ire1 in stress responses, antifungal drug resistance, and virulence in *Cryptococcus neoformans*

16:50~17:05: **Kum-Kang So** (*CeFP & Chonbuk National University*)

Production of a key pharmacophore-phleochrome from a phytopathogenic fungus *Cladosporium phlei*

Chair : Dr. Sung-Hwan Yun (*Soonchunhyang University*)

17:05~17:40: **Dr. Jun-Hyung Park** (*Insilicogen, Inc.*)

NGS data applications using bioinformatics technology

Chair : Mr. Dong Yeon Suh (*Dankook University*)

17:40~17:55: **Nan Hee Yu** (*Sunchon National University*)

Isolation and cloning of a non-reducing polyketide synthase gene from the lichen forming fungus *Hypogimnia physodes*

17:55~18:10: **Hye Won Kim** (*Kangwon National University*)

Cloning, Expression and Partial Purification of Chitinase 2 from *Coprinellus congregatus*

18:10~19:00: **Dinner**

Chair : Dr. Sook-Young Park (*CeFP & Seoul National University*)

19:00~19:15: **Je-Seop Park** (*KCMF & Konyang University*)

PCR-reverse blot hybridization assay for species identification of dermatophytes

19:10~19:30: **Sun Jue Park** (*Kangwon National University*)

Partial cloning of keratinase gene from dermatophyte species and determination of keratin degradation activity by Fungi.

Chair : Dr. Jung A Kim (*Sunchon National University*)

19:30~19:45: **Myung-Kil Cho** (*Korea Forest Research Institute*)

Biodegradation of *Pinus densiflora* by white rot fungus, *Polyporus brumalis*

19:45~20:00: **Yeongseon Jang** (*Korea University*)

The Survey of Mushrooms in Korea

20:00~20:15: **Taking Group Pictures**

20:15~22:00: **POSTERS & MIXER**

Jan. 6, 2012

8:00~9:00: **Breakfast**

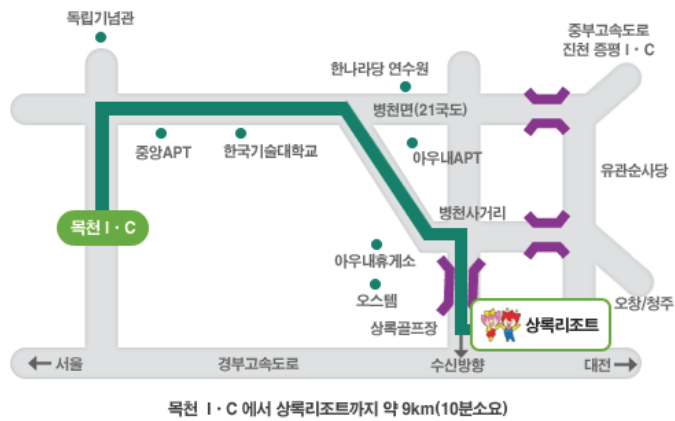
9:00~11:00: **Group Discussion & General Meeting**

11:00: **Closing Remarks**

천안 상록리조트 오시는 길

(주소 : 충남 천안시 수신면 장산리 669-1번지)

컨퍼런스 장소 : 리조트 내 컨벤션 센터 2층 상록홀
숙 소 : 상록 콘도



대중교통

- 천안고속터미널/천안역(출발) -> 리조트(종점)
- 시내버스 : 500번 (20분 -> 30분간격)
- 소요시간 : 40 - 50분

유스호스텔 (상록콘도) 소개 | sangnokcondo info

600명 이상투숙가능하며, 편리하고 실용적인 시설 상록유스호스텔, 상록콘도. 자연과 인간이 하나로 조화되는 감동이 있습니다. 계절마다 변화하는 울창한 산을 배경으로 푸른정원과 산책로가 있어 더욱더 자연의 운치를 더해주는 편안하고 아늑한 유스호스텔입니다.



한국미생물학회 사상성진균 학술분과 제15회 컨퍼런스 안내

학회 사상성진균 학술분과에서 제15회 컨퍼런스를 아래와 같이 개최합니다. 관련 회원님들의 많은 관심과 참여를 부탁드립니다.

[아 래]

1. 일시 : 2012년 1월 5일(목) 12:30 ~ 6일(금) 11:00

2. 장소 : 충남 천안상록리조트 ([홈페이지](#)), 상록홀

3. 등록비 : 책임급, 선임급, 교수 : 60,000원 /

대학원생, 학부생, 석사/학사급 연구(조)원 : 40,000원

4. 초청연사 :

좌장 : 한갑훈 박사 (우석대학교)

Dr. Hiromi Nishida (University of Tokyo, Japan)

Comparative studies of fungal nucleosome positioning

좌장 : 반응선 박사 (연세대학교)

Dr. Kiminori Shimizu (Chiba University, Japan)

Histopathological study on *Cryptococcus* infection

좌장 : 윤성환 박사 (순천향대학교)

Dr. Jun-Hyung Park (Insilicogen, Inc.)

NGS Data Applications Using Bioinformatics Technology

좌장 : 맹필재 박사 (충남대학교)

Dr. Dong-Min Han (Wonkwang University)

The two negative regulators of sexual development in *Aspergillus nidulans*

5. 연락처 : 전자우편 (jhyoon@shungshin.ac.kr)

분과장 : 채순기 (배재대), 간사장 : 윤진호 (성신여대),

간사 : 반응선 (연세대), 윤성환 (순천향대), 한갑훈 (우석대)